

CIRCLE  
THEATRE  
PRESENTS



# A Night With Janis Joplin

By Randy Johnson

JANUARY 29 - FEBRUARY 21  
**SEASON 2026: ICONIC**



**#1** **IN TEXAS FOR  
INTERNSHIPS**

— *The Princeton Review*

**THE UNIVERSITY OF TEXAS AT DALLAS**

[utdallas.edu/different](http://utdallas.edu/different)





Live music & concerts,  
festivals & events,  
sports, arts & culture  
and more...

Know what's up in Funky  
Town year round with  
our always available,  
always updated calendar  
of events, entertainment,  
and free activities in  
Fort Worth.

**WHAT'S UP**  
**FORT WORTH**

[WhatsUpFortWorth.com](http://WhatsUpFortWorth.com)







**GORDON**  
**Boswell**  
SINCE 1919

**GORDONBOSWELL.COM**  
**817.332.2265**





Funding for this production is provided by  
The Rea Charitable Trust

# A NIGHT WITH JANIS JOPLIN

Written and Created by RANDY JOHNSON

---

DIRECTED BY ASHLEY H. WHITE<sup>+</sup>  
MUSIC DIRECTED BY VICKY NOOE

REGIONAL PREMIERE

## STARRING:

BROOK BAKER\* ..... JANIS JOPLIN  
JANETTE ROBINSON ..... JOPLINAIRE #1  
MICAELA WORKMAN ..... JOPLINAIRE #2  
TAMYA "TJ" SIMMONS ..... JOPLINAIRE #3  
ALAIA ADRIANA ..... JOPLINAIRE #4

This production runs approximately 2 hours with a 15-minute intermission.  
Any video and/or audio recording of this production is strictly prohibited.

## CREATIVE TEAM:

DIRECTOR ..... ASHLEY H. WHITE<sup>+</sup>  
MUSIC DIRECTOR ..... VICKY NOOE  
STAGE MANAGER ..... KRIS BLACK JASPER\*  
SCENIC DESIGNER ..... LEAH MAZUR  
COSTUME DESIGNER ..... CARLY HINSON  
CHOREOGRAPHER: "SPIRIT IN THE DARK" ..... KIANDRA BROOKS  
PRODUCTION MANAGER ..... REAGAN FITZGERALD\*  
TECHNICAL DIRECTOR ..... KAE STYRON

Originally produced on Broadway by Daniel Chlewich, Todd Gershwin and  
Michael Cohl.

A Night with Janis Joplin is presented by special arrangement with Broadway  
Licensing Global. ([www.broadwaylicensing.com](http://www.broadwaylicensing.com))

---

\* Member of Actors' Equity Association, the Union of Professional Actors & Stage Managers in the United States (AEA)

<sup>+</sup> Member of Stage Directors and Choreographers Society (SDC)

This playbill is a production of **PERFORMING ADS** 

**BOARD OF DIRECTORS**

Jeremy Davis, **President**  
 Blake Lentz, **Vice President**  
 Lewis Schwartz, **Treasurer**  
 Lana K. Hoover, **Secretary**  
 Mikaela Baker  
 William (Konrad) Hartmann  
 Leah Mazur  
 Zak Reynolds  
 Chris Sanders  
 Brett Warner

**ADVISORY BOARD**

Susan Blue, M.D.  
 Eric Canales  
 Rory Divin  
 Lois Sonnier Hart  
 Wm. F. "Bill" Hart  
 Leah M. King  
 Betty Lay-Korenek  
 Maddie Lesnick  
 Dr. Alan Lobaugh  
 Dr. Harry B. Parker  
 Greg Phillips, M.D.  
 Darla Robinson  
 Ernestine Rose  
 Catherine Rude  
 Michael Schneiderman  
 Del Shores  
 Cathy Taylor  
 Bruce Weiner  
 Connie Whitt-Lambert  
 Jhani Wright-Williams  
 Riki Zide

**CIRCLE THEATRE STAFF**

Executive Director . . . . . Tim Long  
 Artistic Director . . . . . Ashley H. White\*  
 Technical Director . . . . . Kae Styron  
 Box Office Manager . . . . . Bekah Barham  
 Marketing Team . . . . . Faye Austin, Angie Robinson  
 Finance & Development . . . . . Courtney Douglas  
 Production Manager . . . . . Reagan Fitzgerald\*  
 Patron Services . . . . . Alejandro Saucedo  
 Office Management . . . . . Kris Black Jasper\*  
 Grant Writer . . . . . Cathy O'Neal  
 Photography . . . . . Evan Michael Woods  
 Artist in Residence . . . . . Leah Mazur  
 Front of House Team . . . . . Angie Robinson,  
 Stella Fitzpatrick, Darbi Lanham, Jacobie Thornton, Rin Decardenas,  
 Grace Philipbar, Garyn Robinson, Kayle Richey

**CONTACT CIRCLE THEATRE:**

BOX OFFICE: 817.877.3040

**MAILING ADDRESS:**

P.O. Box 470456  
 Fort Worth, TX 76147-0456

WEBSITE | [circletheatre.com](http://circletheatre.com)

FACEBOOK | [circletheatrefw](http://circletheatrefw)

TWITTER | [circle\\_theatre](http://circle_theatre)

**THEATRE ADDRESS:**

230 West Fourth Street  
 Fort Worth, TX 76102

INSTAGRAM | [@circletheatre](http://@circletheatre)

YOUTUBE | [/circletheatre2](http://circletheatre2)

TIKTOK | [@circletheatre](http://@circletheatre)

**SPECIAL THANKS**

Jeremy Davis as this show's Board Representative, University of Texas at Arlington, Evan Michael Woods for promo photos, and TayStan Photography for production photos.

Proud member of the



The Director-Choreographer is a member of the **STAGE DIRECTORS AND CHOREOGRAPHERS SOCIETY**, a national theatrical labor union.



Actors' Equity Association (AEA), founded in 1913, represents more than 45,000 actors and stage managers in the United States. Equity seeks to advance, promote and foster the art of live theatre as an essential component of our society. Equity negotiates wages and working conditions, providing a wide range of benefits, including health and pension plans. AEA is a member of the AFL-CIO, and is affiliated with FIA, an international organization of performing arts unions. The Equity emblem is our mark of excellence. [www.actorsequity.org](http://www.actorsequity.org)

Circle Theatre is partially supported by Arts Council of Fort Worth and Tarrant County; The Texas Commission on the Arts, a state agency; and the National Endowment for the Arts, a Federal Agency.

**ARTS COUNCIL**  
**OF FORT WORTH**



Texas  
 Commission  
 on the Arts

**NATIONAL**  
**ENDOWMENT** for the **ARTS**  
[arts.gov](http://arts.gov)







# CIRCLE THEATRE



PLEASE HELP US FULFILL OUR MISSION TO CAPTIVATE AND ENGAGE OUR DIVERSE COMMUNITY THROUGH THE ART OF INNOVATIVE LIVE THEATRE.

## WAYS TO SUPPORT OUR MISSION

1. Tell your friends and family about us and bring them to a show!
2. Become a Season Subscriber to Circle Theatre
3. Donate at our box office, by calling 817.877.3040 or online at [circletheatre.com](http://circletheatre.com)
4. Follow us on our social media accounts | @circletheatre
5. Subscribe to our newsletters to keep up with everything Circle!





## RANDY JOHNSON

**Randy Johnson**<sup>+</sup> is a Broadway Director and published playwright. He made his Broadway debut as a playwright-director with Tony Award nominated musical *A Night with Janis Joplin* at the Lyceum Theatre. He is a graduate of the USC School of Dramatic Arts in Los Angeles. He has produced, directed and written some of the most diverse, enduring, groundbreaking and landmark events on the world stage. His work has been seen on Broadway, Off Broadway, regional theatres across the United States and Canada, London's West End, Radio City Music Hall, Madison Square Garden, Carnegie Hall, The Grand Ole Opry and the Ryman Auditorium in Nashville, Wembley Arena and O2 arena in the United Kingdom, The Universal Amphitheater in Los Angeles and L'Olympia in Paris. Most recent nomination for excellence in theatre is the 2019 NAACP Theatre Awards - Best Director of a Musical for *Shout Sister Shout* at the Pasadena Playhouse. This is his second NAACP nomination for his work. For the 2014 NAACP Theatre Awards - was a Best Director Nominee for his work on *A Night with Janis Joplin*. He is a recipient of "The Crystal Apple Award" for his work with Aids Project Los Angeles, and received the 'Volunteer of the Year' for his work with *La Shanti*. He was named Best Director by DC Theatre Scene for his work on *Smokey Joes Cafe* at Arena Stage. Broadway World Awards: New York City, Washington DC, Cleveland, Austin, San Jose, Milwaukee. Portland, Raleigh, and Pasadena for which he was nominated Best Director. Randy is a member of the SDC - Society of Stage Directors and Choreographers, The Dramatists Guild and Canadian Actors Equity (Directing Division). Agency Contact - Abrams Artists Agency, New York.

*via concordtheatricals.com*



**"Kozmic Blues"** written by Janis Joplin and Gabriel Mekler. Published by (c) Universal Music Corp. (ASCAP), Strong Arm Music (ASCAP). All rights reserved. Used by permission. | **"Turtle Blues"** written by Janis Joplin. Published by Strong Arm Music (ASCAP). All rights reserved. Used by permission. | **"Down On Me"** written by Janis Joplin. Published by Strong Arm Music (ASCAP). All rights reserved. Used by permission. | **"Mercedes Benz"** written by Janis Joplin, Michael McClure, and Bob Neuwirth. Published by Strong Arm Music (ASCAP) and Sethward Songs (BMI). All rights reserved. Used by permission. | **"Ball and Chain"** written by Willie Mae Thornton. Published by Bro 'n Sis Music Inc., By Arrangement with Round Hill Music. Pub. by Kenwon Music (BMI), Admin by Songs of Kobalt Music Publishing. | **"I Shall Be Released"** words and music by Bob Dylan. (c) Universal Tunes on Behalf of Itself (SESAC). | **"Raise Your Hand"** words and music by Stephen Lee Cropper, Eddie Floyd, Alvertis Isbell. (c) Irving Music, Inc., Songs of Universal, Inc. On Behalf of Itself and PW Ballads (BMI). | **"Nobody Knows You When You're Down and Out"** words and music by Jimmie Cox © Universal Music Corp. (ASCAP). | **"Summertime"** from "Porgy and Bess". Words and Music by George Gershwin, DuBose Heyward, and Ira Gershwin. Copyright © 1935 (Renewed) Nokawi Music (ASCAP) / Frankie G. Songs (ASCAP) / Ira Gershwin Music (ASCAP) / DuBose and Dorothy Heyward Memorial Fund (ASCAP). Nokawi Music administered in the United States by Steve Peter Music (ASCAP). Frankie G. Songs and the DuBose and Dorothy Heyward Memorial Fund administered by Downtown Music Publishing. Ira Gershwin Music administered by WB Music Corp. Used by Permission. International Copyright Secured. All Rights Reserved. Published by Downtown Music. All rights on behalf of Ira Gershwin Music administered by Warner Geo Met Ric Music. | **"Tell Mama"** written by Clarence George Carter, Marcus Lewis Daniel, Wilbur Terrell. © 1966 Screen Gems-EMI Music Inc. All rights administered by Sony Music Publishing (US) LLC, 424 Church Street, Suite 1200, Nashville, TN 37219. All rights reserved. Used by permission. | **"Maybe"** written by Richard Barrett. ©1957 EMI Longitude Music. All rights administered by Sony Music Publishing (US) LLC, 424 Church Street, Suite 1200, Nashville, TN 37219. All rights reserved. Used by permission. | **"Me And Bobby McGee"** written by Fred L Foster, Kris Kristofferson. © 1969 Combine Music Corp. All rights administered by Sony Music Publishing (US) LLC, 424 Church Street, Suite 1200, Nashville, TN 37219. All rights reserved. Used by permission. | **"Cry Baby"** written by Jerry Ragovoy and Bert Berns. © 1963 Screen Gems-EMI Music Inc., Unichappell Music Inc. All rights on behalf of Screen Gems-EMI Music Inc. and Unichappell Music Inc. administered by Sony Music Publishing (US) LLC, 424 Church Street, Suite 1200, Nashville, TN 37219. All rights reserved. Used by permission. Published by Sloopy II Music Inc., Administered by Wren Music Co, A Division of MPL Music Publishing Inc. (BMI). Published by Downtown Music. | **"Piece of My Heart"** written by Jerry Ragovoy and Bert Berns. Published by Sloopy II Music Inc., Administered by Wren Music Co, A Division of MPL Music Publishing Inc. (BMI). © 1967 Sony Music Publishing (US) LLC. All rights on behalf of Sony Music Publishing (US) LLC administered by Sony Music Publishing (US) LLC, 424 Church Street, Suite 1200, Nashville, TN 37219. All rights reserved. Used by permission. Published by Unichappell Music Inc. (BMI). | **"Today I Sing the Blues"** written by Curtis Reginald Lewis. © 1948 EMI Music Publishing LTD. All rights administered by Sony Music Publishing (US) LLC, 424 Church Street, Suite 1200, Nashville, TN 37219. All rights reserved. Used by permission. | **"Combination of the Two"** written by Sam Andrew. Published by: Cheap Thrills Music (ASCAP). Originally performed by: Big Brother & the Holding Co.. | **"Spirit in the Dark"** written by Aretha Franklin. Courtesy of Springtime Music. | **"My Baby"** written by Jerry Ragovoy and Mort Shuman. Published by Unichappell Music Inc. (BMI) and Mort Shuman Songs LLP (BMI). All rights on behalf of Mort Shuman Songs LLP administered by Warner-Tamerlane Publishing Corp. | **"Try (Just A Little Bit Harder)-Janis"** written by Jerry Ragovoy and Chip Taylor. Published by Unichappell Music Inc. (BMI). | **"Stay With Me"** written by George Weiss and Jerry Ragovoy. Published by Chappell & Co. Inc. (ASCAP). This selection is used by special arrangement with Concord Music Group, Inc., www.concord.com. All Rights Reserved. | **"Little Girl Blue"** music and words by Richard Rodgers and Lorenz Hart. This selection is used by special arrangement with Rodgers & Hammerstein Holdings LLC, www.concord.com. All Rights Reserved. Published by Warner Chappell Music LTD (PRS). | **"I'm Gonna Rock My Way to Heaven"** written by Jerry Ragovoy and Jenny Dean. Published by Tune Room Music. | **"Bye, Bye Baby"** written R.P. St John Jr. Published by BMG Gold Songs (ASCAP) obo Pink Rex Publishing (ASCAP) obo Mainspring Watchworks Music (ASCAP). Used by permission. All rights reserved.

**Music Clearances by Music Rightz/Yolanda Ferraloro, Julia Bardack**



**Ashley H. White<sup>+</sup>** (*she/her*) is a multi-hyphenate artist, whose passion lies within storytelling. She is an award-winning director, fight and intimacy director, playwright and teaching artist, with international credits and decades of experience creating theatre. As a director, she has helmed numerous productions, each incorporating significant play and a pursuit of creative risk. Most recently, she directed *Noises Off* at Dallas Theatre Center and *Natasha, Pierre, and the Great Comet of 1812* at Theatre Three. As a playwright, Ashley recently enjoyed a hit run of her original work, *Imposter! Hypocrite! Tartuffe!* (*based on the play by that one guy*), at Circle Theatre, which she also directed. Her previous devised pieces include *The Forever Quest* at Cry Havoc and *A Room For Vincent* at Union. She was commissioned by Bishop Arts Theatre Center to pen a new play based on Ibram Kendi's *Stamped from the Beginning*. She is a certified Intimacy Director with IDC Professionals and has worked across the U.S., in addition to film and television, where her intimacy coordination work can be seen on Amazon, The CW, Paramount+, and other networks and studios. An accomplished Fight Director, she is also a Certified Teacher with the Society of American Fight Directors. Ashley is a sought-after educator and the creator of The Cycle of Consent—an approach to building and navigating safe creative spaces. She is a proud member of SDC and has received nominations for the SDC Zelda Fischander and SDC Barbara Whitman awards for innovation in directing. Ashley is the recipient of five DFW Critics Forum Awards for Outstanding Direction, as well as special recognitions from the Critics Forum for her fight and intimacy work. She is a proud member of SDC and has received nominations for the SDC Zelda Fischander and SDC Barbara Whitman awards for innovation in directing.

Ashley is proud to be the Artistic Director of Circle Theatre, a professional theatre based in Downtown Fort Worth.

[www.ashleyhwhite.com](http://www.ashleyhwhite.com) | [www.circletheatre.com](http://www.circletheatre.com)



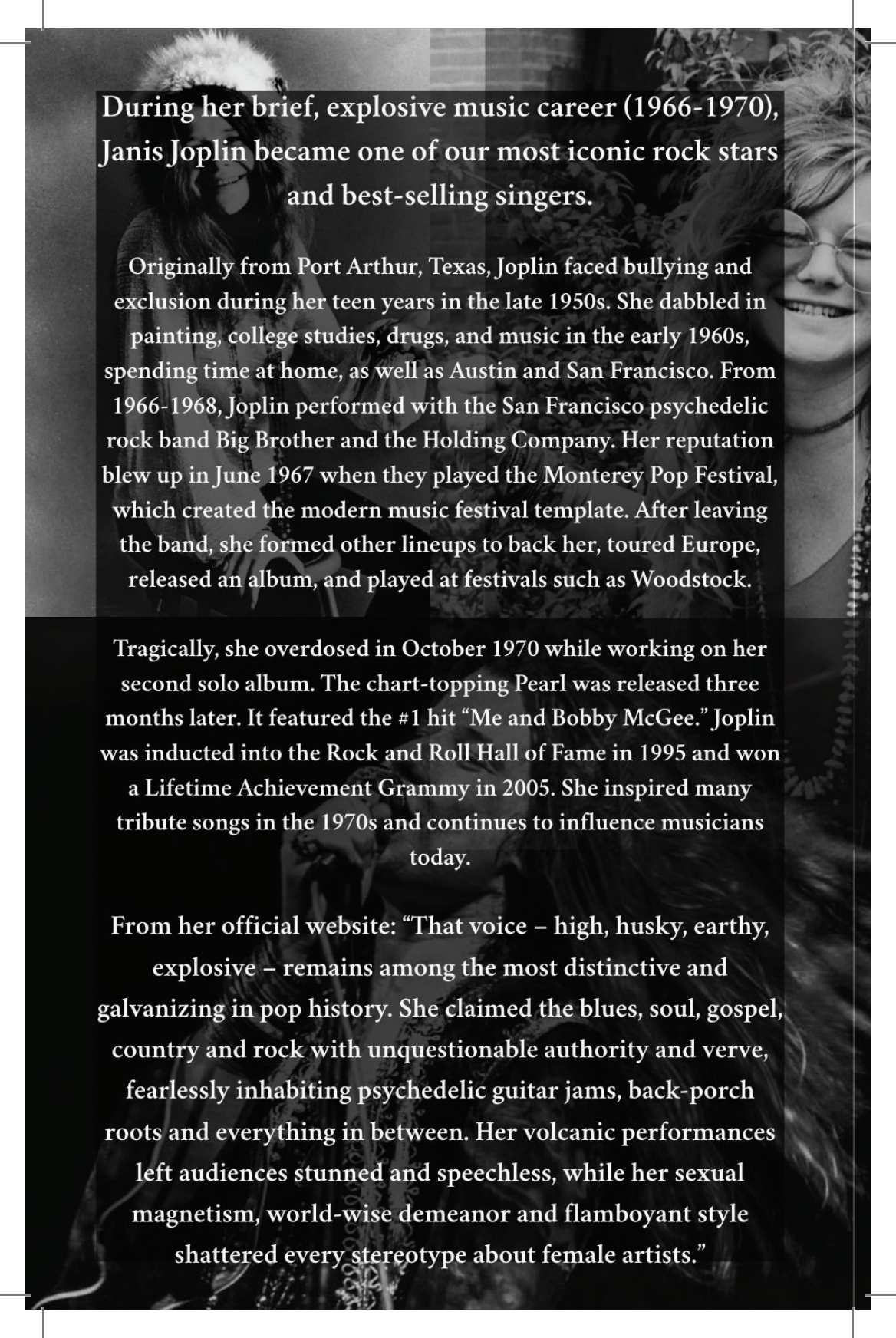
*from the Director | Ashley H. White<sup>+</sup>*

*A Night With Janis Joplin* is more than a concert or a story about one extraordinary artist. It is a reminder of how cultural icons shape movements, challenge norms, and give voice to collective longing. Janis did not stand alone. She rose alongside artists who used music as protest, prayer, and connection, helping define an era driven by a deep desire for peace, truth, and liberation. Their impact still echoes because the questions they asked and the freedom they demanded remain unfinished work.

We are living in a moment that is hungry for authenticity, for art that is felt rather than filtered. In times of uncertainty, art and culture are not luxuries. They are lifelines. They gather us, soften us, and remind us of our shared humanity. Janis sang from a place of raw honesty, and that kind of expression feels urgently necessary again. Her voice reminds us that beauty can come from brokenness and that truth does not need to be polished to be powerful.

The Velvet Lounge was chosen intentionally for this experience. This is not a distant stage or a passive seat. It is an immersive space where sound lives in your body, where you feel the music vibrate through the room and into your soul. Tonight, we invite you to step inside the music, the history, and the emotion, and to let it move you fully.

Welcome to the 2026 Iconic Season. We are honored to begin it with a voice that still dares us to feel, to listen, and to live out loud.



During her brief, explosive music career (1966-1970), Janis Joplin became one of our most iconic rock stars and best-selling singers.

Originally from Port Arthur, Texas, Joplin faced bullying and exclusion during her teen years in the late 1950s. She dabbled in painting, college studies, drugs, and music in the early 1960s, spending time at home, as well as Austin and San Francisco. From 1966-1968, Joplin performed with the San Francisco psychedelic rock band Big Brother and the Holding Company. Her reputation blew up in June 1967 when they played the Monterey Pop Festival, which created the modern music festival template. After leaving the band, she formed other lineups to back her, toured Europe, released an album, and played at festivals such as Woodstock.

Tragically, she overdosed in October 1970 while working on her second solo album. The chart-topping Pearl was released three months later. It featured the #1 hit "Me and Bobby McGee." Joplin was inducted into the Rock and Roll Hall of Fame in 1995 and won a Lifetime Achievement Grammy in 2005. She inspired many tribute songs in the 1970s and continues to influence musicians today.

From her official website: "That voice – high, husky, earthy, explosive – remains among the most distinctive and galvanizing in pop history. She claimed the blues, soul, gospel, country and rock with unquestionable authority and verve, fearlessly inhabiting psychedelic guitar jams, back-porch roots and everything in between. Her volcanic performances left audiences stunned and speechless, while her sexual magnetism, world-wise demeanor and flamboyant style shattered every stereotype about female artists."





## *MEET THE ICONS*

The women who inspired a music legend were queens of American Blues, Jazz, Soul and Rock.

Bessie Smith, Odetta, Etta James, The Chantels, Aretha Franklin and Nina Simone were all instrumental in the history and development of American rock music. Despite representing unique genres, each of their bodies of work feed into rock, and it is the overarching theme between them all and with Janis Joplin.

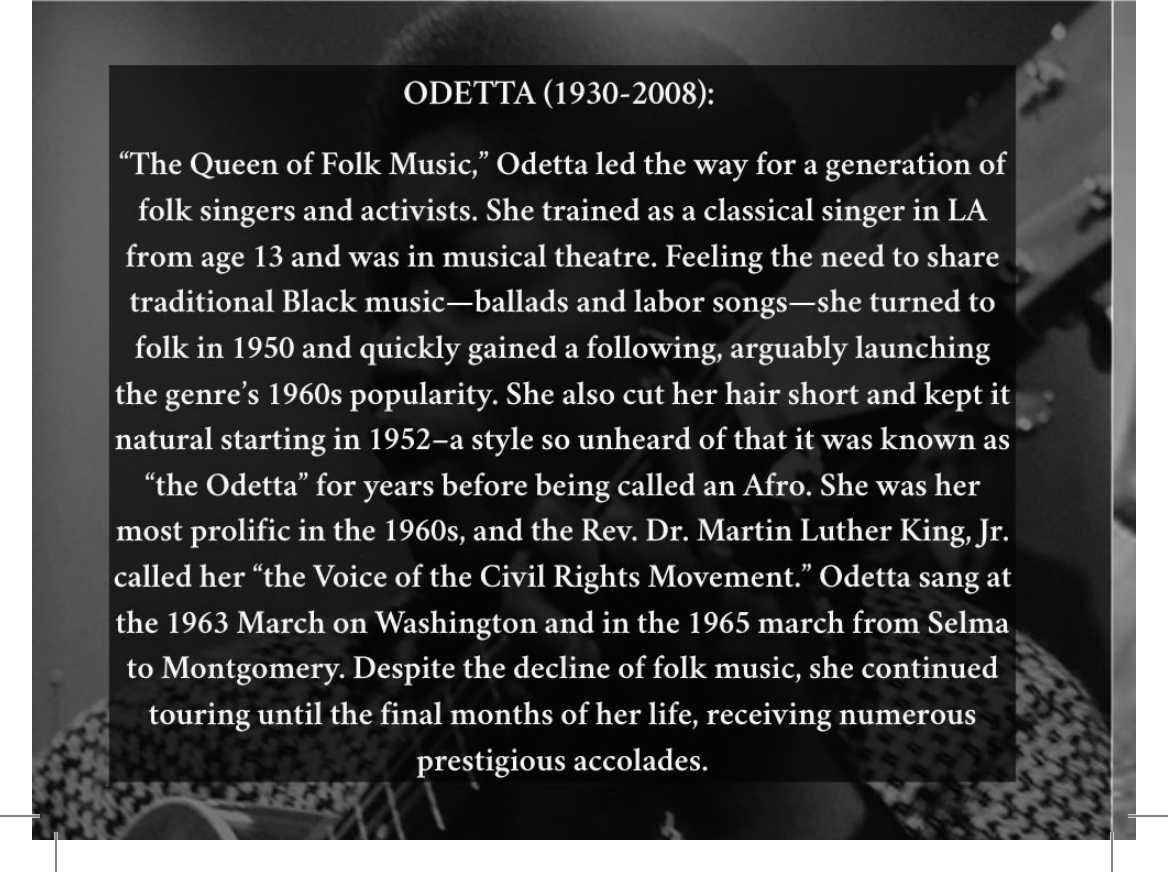
These ICONIC women were inspired by each other and helped to create a strong lineage of traditional Black musical sounds.





### BESSIE SMITH (c.1894-1937):

Known as the “Empress of the Blues,” Bessie Smith was one of the most popular singers of the 1920s. After losing her parents early in life, she started busking and eventually joined a vaudeville circuit, gaining notoriety before signing a record deal in 1923. That year, she had several mainstream hits, with “Downhearted Blues” being one of the most popular songs of the year. She was soon the highest paid Black entertainer in the country at the time. She wrote many of her own songs, using her powerful voice and sharp wit to bring attention to working-class women—encouraging them to talk openly about their challenges and desires. She struggled when the blues lost popularity in the 1930s but found success reinventing herself as a swing artist in her final years.



### ODETTA (1930-2008):

“The Queen of Folk Music,” Odetta led the way for a generation of folk singers and activists. She trained as a classical singer in LA from age 13 and was in musical theatre. Feeling the need to share traditional Black music—ballads and labor songs—she turned to folk in 1950 and quickly gained a following, arguably launching the genre’s 1960s popularity. She also cut her hair short and kept it natural starting in 1952—a style so unheard of that it was known as “the Odetta” for years before being called an Afro. She was her most prolific in the 1960s, and the Rev. Dr. Martin Luther King, Jr. called her “the Voice of the Civil Rights Movement.” Odetta sang at the 1963 March on Washington and in the 1965 march from Selma to Montgomery. Despite the decline of folk music, she continued touring until the final months of her life, receiving numerous prestigious accolades.

### ETTA JAMES (1938-2012):

Etta James' recording career, full of twists and turns, stretched from 1954 to 2011. Raised by a series of guardians in California, she was a standout in church choir as a small child before forming a girl group at age 14. In 1954, the group signed a record deal, and Jamesetta Hawkins became Etta James. They had an R&B hit in 1954 with "The Wallflower" and joined Little Richard's national tour. Beginning with her first solo album in 1960, James cycled through genres, record labels, varying degrees of popularity, and personal ups and downs for three decades. She had dozens of R&B hits and was a favorite among other top musicians. She mastered the blues, jazz, rock, and soul, but she struggled to break through to the top of the pop charts. In the 1990s, she began to get mainstream recognition for her music and achievements. Her signature song was "At Last."

### THE CHANTELS (b. 1940-1943, formed 1957):

The Chantels developed and defined the iconic sound that would come to be associated with the "girl group era" of the late 1950s-1960s—one of the first such R&B groups to gain national fame. They were five friends (Arlene Smith, Sonia Goring, Renée Minus, Jackie Landry, and Lois Harris) who attended school and choir together at St. Anthony of Padua in the Bronx. By the time they signed to a record label in 1957, they had spent years learning vocal precision through Gregorian chants and Latin hymns. Member Arlene Smith wrote their material, including their smash hit, "Maybe," which peaked in early 1958. The group had several other modest hits from 1958-63, despite changes in lineup and labels. They disbanded in 1970, with most members pursuing careers outside of music. Goring, Minus, Landry, and Harris got back together in 1995, and appearances continued until at least 2021.





### ARETHA FRANKLIN (1942-2018):

The undisputed “Queen of Soul,” Aretha Franklin is widely considered the greatest singer of all time. She started out singing gospel as a child in Detroit, recording and touring from the age of 14. She decided to switch to pop music and signed with Columbia at 18. However, her rise to international stardom came in 1967, when she moved to Atlantic Records and infused her music with more of her gospel roots. From 1967-1972, she released an unbelievable number of hits, such as “Respect” and “Chain of Fools.” By 1968, she was the most famous singer in the country. She and her music had also become linked to the movements for civil and women’s rights. While this would remain her most commercially successful time, Franklin continued recording and performing until 2017, maintaining her status as a musical titan, frequently hitting the Billboard charts, and accumulating a truly unprecedented series of accolades.



### NINA SIMONE (1933-2003):

Nina Simone is called the “High Priestess of Soul” and identified most strongly as a folk artist. However, she delighted in defying boundaries with her eclectic career—blending and jumping between pop, folk, jazz, blues, soul, and other genres. Talented and highly trained in classical piano, she got a job playing and singing at a bar in 1954. She created her stage name (from Eunice Kathleen Waymon) to hide the gig from her parents. She quickly had a popular nightclub act along the East Coast and started recording in 1957. Inspired by personal and national events, as well as her mentor Lorraine Hansberry, Simone dared to use her songs to explicitly fight for equality after 1964. Songs such as “Mississippi Goddam,” “Four Women,” and “Young, Gifted, and Black” made her a Civil Rights icon. She lived primarily abroad after 1970—famous for her unpredictable, unforgettable live performances around the world, her virtuosic musicality, and her powerful expressions of emotion.



## JANIS JOPLIN TIMELINE

January 19, 1943

Janis Joplin is born in Port Arthur, TX

She graduates high school and moves to California, where drug use almost kills her. Her friends pool money to send her home and get sober.

1960-1965

1966-1968

Janis moves back to San Francisco and becomes the lead singer of Big Brother and the Holding Company. Columbia Records releases BBHC debut at #60. They perform at the Wake for MLK Jr. in April '68. In August, *Cheap Thrills* is released and reaches #1, the most successful album of 1968.

Janis leaves BBHC and debuts the Kozmic Blues Band. They do a European tour over spring and perform at Woodstock in August. Janis releases her solo album *I Got Dem Ol' Kozmic Blues Again Mama* in September.

1969

JAN - AUG 1970

Janis splits with the Kozmic Blues Band and forms the Full Tilt Boogie Band. In April, she performs reunion concerts with BBHC. In August, Janis pays half the cost to provide a headstone for the grave of Bessie Smith. She also attends her 10-year high school reunion.

At the age of 27, Janis Joplin is found dead of a drug overdose at the Landmark Hotel in Los Angeles by her road manager John Cooke. She had been scheduled that Sunday to record vocals on "Buried Alive in the Blues" at Sunset Studios.

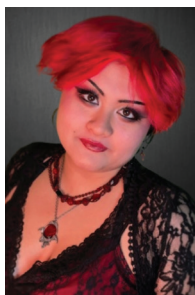
OCT 4, 1970

1971

Janis's last studio recordings are released as the album *Pearl*. Featuring "Me and Bobby McGee" and "Mercedes Benz" (co-written by Janis), the album stays at the top of the charts for nine weeks. 1995 - Janis is inducted into the Rock and Roll Hall of Fame. 2005 - Janis is posthumously awarded a Lifetime Achievement Grammy.

*\*from PBS and her website*

## 18 CAST & CREATIVE TEAM



**BROOK BAKER\* (Janis Joplin)** has been in multiple productions across the metroplex, some her most recent roles include Matron Mama Morton in *Chicago* (NTPA), The Dragon in *Shrek The Musical* (Upright Theatre Co.) & Judas Iscariot In *Jesus Christ Superstar* (Theatre Denton). This is her first performance with Circle Theatre and she's so grateful to get the chance to honor one of her favorite musicians, as well as have the opportunity to work with such a talented team! She'd like to thank her friends & family for their continual support & encouragement. @vampyre.bludx0x0

---



**JANETTE ROBINSON (Joplinaire #1)** is delighted to return to Circle Theatre and the Velvet Lounge! She made her Circle debut in their first Velvet Lounge production, *Ain't Misbehavin'!* A vibrant performer with a passion for jazz, musical theatre, opera and storytelling, she has had the joy of singing as a guest artist with symphonies, fronting legendary bands, performing alongside Broadway legends and bringing unforgettable characters to life onstage. Recently, she has been seen as Justice Charlier in *Rock of Ages* (Firehouse Theatre), Woman in Blue in the staged reading of *For Colored Girls* (Theatre Arlington), Uhura in *Khan!!! The Musical* (Musical Writers), and in *Auntie Explains Christmas* (Jubilee Theatre). Some of her favorite past roles include Shug Avery in *The Color Purple*, Motormouth Maybelle in *Hairspray*, and Sarah in *Ragtime*. Janette is beyond grateful for the love and support of her friends, family, and fellow artists. @itsjustjanette

---



**MICAELA WORKMAN (Joplinaire #2)** is a dynamic performer based in the Dallas–Fort Worth metroplex whose work spans musical theatre, straight plays, and concert-style productions. She is excited to return back to Circle Theatre and the Velvet Lounge. She holds a Bachelor of Arts in Theatre Arts with a concentration in Performance from the University of North Texas, where she trained extensively in acting, movement, and voice. Micaela has appeared in a wide range of theatrical productions, select credits include *Dreamgirls* (Jimmy Thunder Early), *RENT* (Ensemble/Season of Love), *Ain't Misbehavin'*, *Ragtime* (Sarah), *Little Shop of Horrors* (Chiffon), and *The Voices of Donny Hathaway* (Pamela). Her performances in *RENT* and *Dreamgirls* earned her a Best Supporting Actor in a Musical Award and an All-Star Award, respectively. She has worked with several theatres throughout the DFW area, including Circle Theatre, Jubilee Theatre, Uptown Players, Lakeside

# CAST & CREATIVE TEAM 19

Community Theatre, and Lewisville Playhouse. Micaela is passionate about honoring the music, legacy, and emotional truth of the artists she portrays and is grateful to continue sharing powerful stories with live audiences.

[michaelaworkman.com](http://michaelaworkman.com) | [@michaelaworkmantx](https://twitter.com/michaelaworkmantx) | "People will forget what you said, people will forget what you did, but people will never forget how you made them feel." -Maya Angelou



**TAMYAJ. SIMMONS (Joplinaire #3)** is a Dallas native who attended Desoto High School where she studied Classical voice under the direction of Grammy Award Winning Music Educator, Pamela Dawson. She went on to pursue an education in Musical Theater at The American Musical and Dramatic Academy of New York City. She was last seen playing Mary in Calvin J Walker's adaptation of *The Black Nativity* at Bishop Arts Theatre. Some of her credits also include Celie in *The Color Purple*, Dionne in Sierra Repertory Theatre's production of *HAIR!*, Gloria Lewis in *The Movement* at Jubilee Theatre, and Sister Rosetta Tharpe in the touring company of *Tutti Frutti: The Life and Music of Little Richard*. She is overjoyed to be portraying the legendary Aretha Franklin and joining this talented cast while she makes her performance debut here at Circle Theatre. [@tamyajay](https://twitter.com/tamyajay)



**ALAIA ADRIANA (Joplinaire #4)** (*she/they*) is excited to be making her Circle Theatre debut in this amazing cast as Joplinaire #4. Before moving to DFW in August of last year, she could be seen in downtown San Francisco where she was a student at the American Conservatory Theater or onstage in her hometown of San Antonio, Texas. Alaia Adriana is currently a senior at the University of Texas in Arlington and is looking forward to graduating in the fall. She'd like to thank her family, friends, Mango & Dexter for their constant love and support. [@sifu\\_lai](https://twitter.com/sifu_lai)

DIRECTOR..... ASHLEY H. WHITE<sup>+</sup>  
MUSIC DIRECTOR..... VICKY NOOE  
STAGE MANAGER..... KRIS BLACK JASPER\*  
SCENIC DESIGNER..... LEAH MAZUR  
COSTUME DESIGNER..... CARLY HINSON  
CHOREOGRAPHER: "SPIRIT IN THE DARK"..... KIANIRA BROOKS  
PRODUCTION MANAGER..... REAGAN FITZGERALD\*  
TECHNICAL DIRECTOR..... KAE STYRON



## 20 CAST & CREATIVE TEAM



**VICKY NOOE (Music Director)** is a music director and collaborative pianist in the DFW area and currently Lecturer at University of Texas Arlington. She is excited to be making her Circle Theatre debut with *A Night With Janis Joplin* and returning later this year for *Rent*. She has music directed at Dallas Theater Center (*The Little Mermaid*, *Into the Woods*, *Waitress*), Amphibian Stage (*The Amazing, Fabulous, and Spectacular Untruths of Juan Garcia*; *Winter's Cabaret 2025*), Theatre Three (*Xanadu*), and Theatre Arlington (*Fly by Night*). She has also worked with talented young singers as a vocal coach at Boston University's Tanglewood Institute. [www.pianooe.com](http://www.pianooe.com) IG: @pianooe



**KRIS BLACK JASPER\* (Stage Manager)** is an Equity Stage Manager in DFW. Stage Management credits include: *The Curious Incident of the Dog in the Night-time* (Theatre Arlington), *Ain't Misbehavin'* (Circle Theatre), *Bread N' Gravy: The Life of Ethel Waters* (Jubilee Theatre), *Take the Soul Train to Christmas* (Jubilee Theatre), *1619 Project: A One Act Festival* (Bishop Arts Theatre Center), Assistant Stage Management credits include: *Dreamgirls* (Bass Hall w/Jubilee Theatre). Her acting credits include: *For Colored Girls* (staged reading, Theatre Arlington), *Da Kink in My Hair*, *Hoo Doo Love*, *Fabulation*, *Over 40*, *Sister Act: The Musical*. (Jubilee Theatre). She won the 2025 Irma P. Hall Award for Lead Actress for her portrayal of Mother Superior in *Sister Act!* Kris' directing credits include: *Thoughts of a Colored Man* (Asst. Director), *Home* (Director)(Jubilee Theatre), *Black Nativity* (Bishop Arts Theatre Center). She sends love to her three sons as well as her family and friends for all their support and prayers as she continues living in purpose. @iamkblackjazz



**LEAH MAZUR (Scenic Designer)** she/her, MFA University of Kansas, is a scenographer (scenic/lighting/costume design) and visual artist based in the DFW metroplex. Her research explores the blurring of lines between experiencing and becoming performance, the intersections of interactive installation and performance art, as well as the integration of XR (extended reality) into the performing arts as a means of accessibility and expanded storytelling. Upcoming projects include work with Second Thought Theatre. Select credits include productions at Spinning Tree Theatre, Unicorn Theatre, Kansas Repertory Theatre (Kansas City), Lake Dillon Theatre Company (Colorado), Cape May Stage (New Jersey), Anacostia Playhouse, Scena Theatre (Washington D.C.), Amphibian Stage, Theatre Three, Circle Theatre, Altar'd Playhouse, Undermain Theatre, Dallas Theatre Center (DFW), RuPaul's DRAGCON (LA), ArtHaus (NY), and Edinburgh Fringe Festival. She is currently the head of the Theatre Design & Technology BFA program at the University of Texas at Arlington. [www.lmazurdesign.com](http://www.lmazurdesign.com) IG: @lmazur



SEASON 2026: ICONIC

## CAST & CREATIVE TEAM 21



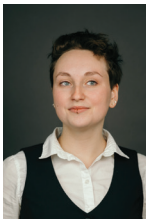
**CARLY HINSON (Costume Design)** is thrilled to be designing at Circle Theatre! She recently graduated with a B.F.A. in Theatre Design and Technology from Baylor University and is now based in the DFW metroplex. She was the Costume Designer for *The Graduate* (WaterTower Theatre) and was the Wardrobe PA for *Mac Beth* (Circle Theatre). Her favorite costuming credits include: *A Midsummer Night's Dream* (Stagedoor Manor), *Othello* (Baylor University), *Sweeney Todd* (Baylor University), and *Friends* (Baylor University). Much love to her family for their support! *carlyhinson*.

com IG: @carly.hinsonn



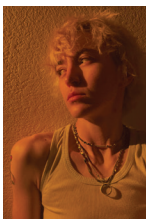
**KIANDRA BROOKS (Choreographer: "Spirit in the Dark")** is a multi-hyphenate artist from Miami, FL. Her choreographic style reflects a rich and diverse foundation, shaped by the teachings of Sylvia Padron and Bernadette Toussaint-Pierre. While earning her BA in English at Florida State University, she was a member of Florida Agricultural & Mechanical University's Mahogany Dance Theatre, where she served as rehearsal director under the leadership of Shepiro Hardemon. She has choreographed many productions such as *The Color Purple* (Jubilee Theatre at W.E Scott Theatre),

*Thoughts of a Colored Man* (Jubilee Theatre), *You're a Good Man, Charlie Brown* (CenterStage), and *Sister Act* (Jubilee Theatre at Bass Hall),—a production that not only marked her debut as Assistant Director but also earned her the 2025 Irma P Hall Award for Best Choreography. Also in 2025, she choreographed *A Strange Loop* and *Ain't Misbehavin'* (Circle Theatre). Committed to cultivating the next generation of artists, she strives to transform the world through movement and the power of artistic storytelling.



**REAGAN FITZGERALD\* (Production Manager)** is an Equity Stage Manager in DFW and the Production Manager at Circle Theatre. Recent Stage Management credits include: *Deer* (Theatre Too), *The Last Five Years* (Circle); *A Strange Loop* (Circle); *The Hatmaker's Wife* (Circle); *Destroying David* (Circle); *Khan!!! A New Musical* (Presented by MusicalWriters.com); *Exit, Pursued By A Bear* (Texas Wesleyan University); *Christmas at the Southern Palace* (Six Flags Over Texas with WOW! Entertainment); *An Almanac for Farmers and Lovers in Mexico* (Oklahoma City University); *Orpheus*

*in the Underworld* (Oklahoma City University). Recent Assistant Stage Management credits include: *All Is Calm: The Christmas Truce of 1914* (Stage West Theatre), *Natasha, Pierre & The Great Comet of 1812* (Theatre Three); *Hundred Days* (Circle Theatre); *High School Musical Theatre Awards* (Broadway Dallas); *Head Over Heels* (Lyric Theatre of Oklahoma); *The Threepenny Opera* (Oklahoma City University). They send love and thanks to their family, friends, and dog Lemonade!



**KAE STYRON (Technical Director)** is thrilled to be on the team at Circle! Whether it be them or their work on the stage, Kae has made their mark on DFW theatre stages as a multifaceted theatre artist. For the past five years they served as the Director of Production and resident Scenic Designer at Watertower Theatre, as well as a freelance scenic designer and TD for multiple venues around the Dallas area. Much love to all of my friends and family for never wavering in their love and support for my pursuit of my wild, wacky passions.

**THE CIRCLE THEATRE  
SHOWSTOPPER:****\$25,000+**

Anonymous

**THE PRODUCER:****\$5,000+**

Stan Graner

**THE ARTIST:****\$3,000+**

Anne Buller

Betty Korenek

Gregory Phillips

Dale Wheeler

**THE PATRON:****\$500+**

Anonymous

Jeff &amp; Ashley Babb

Cynthia Belden

Eric &amp; Alejandra Canales

Martha Williams Group

Lauren Martin Gunderson

Konrad Hartmann

Paige Hendricks

Yvonne Johnson

Dan Johnston

Ethan Klos

James &amp; Stephanie Long

Janet &amp; Christopher Moore

Lynn Morgan

Maria E Ostand

Donald Perfect

Linda Siy

Mrs. Sherry L. Vetter

Jessie Wallace

Hollace &amp; Bruce Weiner

Dave &amp; Julie Wende

Diane Zubalsky

**THE STAGE MANAGER:****\$250+**

Jenna Anderson

Jeanette Bell

David Benson

Lee Blankenship

Courtney Brooks

Dr. Gail Brothers

Jaime Dickerson

Allison Fitzgerald

Brian Freeman

Gary Futoma

Whitney Dean

Parris Jones

Marilyn Kocian

Thomas Marshall

Tom Meyer

Harry &amp; Karen Parker

Bob Phillips

Lauren Redding

Darla Robinson

Lewis Schwartz

Gregory Sylvestri

Ashley White

Jeff Heald &amp; Michael Zerbach

Dr. Michael F. Zide

**THE DIRECTOR:****\$100+**

Jennifer Andrews

Deborah Brown

Kathryn Bryan

Caroline Carter

Lauren Ivy Chiong

Margaret Coleman

Lisa Dalton

Gay Davidenko

Roger Drummond

Stephen M. Ehlich

Cheryl Ford-Mente

Sharon Gabert

William Gerhart

Mary Lee Haffley

Paul Jones

Raymond &amp; Rhoda Keptra

Lisa Kerman

Donna Kruse

Sam Lisman

BillyAnn Litteken

Jason Lovelady

Donetta Ludwick

Gregory Lush

Leah Mazur

Michael McFarland

Kawana Moore

Cathy O'Neal

William Raecke

Ron &amp; Melanie Rosen

Krista Scott

Derek Shaw

Walter &amp; Linda Shaw

Taylor Staniforth

Dennis Trojak

Ms. Nancy Tuffin

Julie Wheat

Mary M. Williams

Micaela Workman

Bert Zeitlin

**THE DESIGNER:****\$45+**

Mark &amp; Mary Jane Alland

Stephen Anderson

Susan Bartlett

Darie Berube

Ann Bracey

Patrick Bynane

David Coffee

Sandie Connor

Annie Costello

Julie Crawford

Debbie Dacus

Holly Ellman

Lisa Fairchild

Stephanie Felton

Jill Freer

Lawrence Goodman

Joey Hamilton

Robyn Houston

Reba Jalil

Meda Kessler

Blake Lentz

Diane Martichuski

Barbara McCarthy

Helen Gay Ogden

Kim Raynor

Greg Ricks

Karen Robinson

Elizabeth Rodzinski

Jerry Schlesinger

Carol Stanford

Michael J. Thomas

Fredericka Wilson

Dennis Wolfe

**FOUNDATIONS**

Amon G. Carter Foundation

Ann L. &amp; Carol Greene Rhodes

Charitable Trust

Arts Fort Worth

Connally Stephenson Inc.

David &amp; Namie McCahan

Charitable Fund

Fichtenbaum (Bank of America)

Jonathan P. Formanek

Foundation

Joyce Patè Capper Charitable  
Trust

Linda Lee &amp; Jay Isham

The Rea Charitable Trust (Wells  
Fargo)

The Shubert Foundation

Sid W. Richardson Foundation

Texas Commission on the Arts/

Arts Create

Texas Commission on the Arts/

Arts Respond/Education

TUW Rhodes Charitable

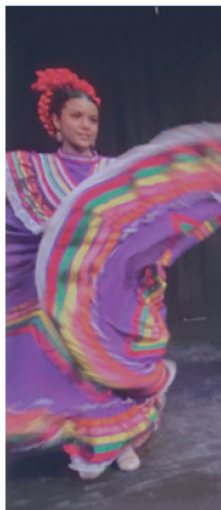
Virginia O'Donnell Charitable

Trust

Wilson Parker

*Thank you for your  
support of live theatre  
in Fort Worth!*

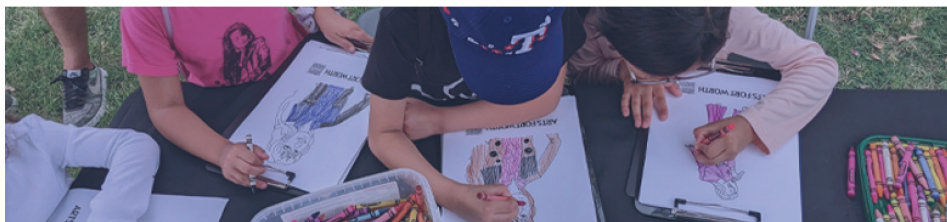




# ARTS FORT WORTH

together we make art happen

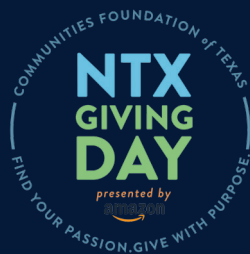
[artsfortworth.org](https://artsfortworth.org)



# THANK YOU

## FOR YOUR SUPPORT DURING THE 2025 NORTH TEXAS GIVING DAY!

Together, we raised more than \$12,000!  
Missed the date and want to donate? Visit [circletheatre.com/donate](https://circletheatre.com/donate)



Anonymous  
Jenna Anderson  
Jennifer & Jimmy Andrews  
Mike & Susan Bartlett  
Cynthia Belden  
Jeanette Bell  
Mary & David Benson  
Lee & Missy Blankenship  
Ann Bracey  
Deborah Brown  
Kathryn & Lowell Bryan  
Patrick Bynane  
Eric & Alex Canales  
Gigi Cervantes  
Lauren Ivy Chiong  
David Coffee  
Margaret Coleman  
Debbie & Brent Dacus  
Lisa Dalton  
Gay Davidenko  
Nancy & Jaime Dickerson  
Savannah Elayach  
Holly Ellman  
Lisa Fairchild & Kim Titus  
Stephanie Felton  
Brian Freeman  
William Gerhart  
Mary & Larry Goodman

Joey Hamilton  
Jeff Heald  
Lindsey Hertel  
Kris Ikejiri  
Denise Ingram  
Reba Jalil  
Dan & Delta Johnston  
Parris Jones  
Paul Jones  
Liz & Harry Josten  
Elizabeth Kensek  
Raymond & Rhoda Keptra  
Meda Kessler  
Ethan Klos  
Betty Korenek  
Donna S. & Jon Kruse  
Linda M. Lee & Jay Isham  
Elly Lindsay & Randy Bonifay  
Sam Lisman  
Laura Lites  
BillyAnn & Aaron Litteken  
Dana & Alan Lobaugh  
James & Stephanie Long  
Donetta Ludwick  
Penny Maas  
Thomas Marshall  
Diane Martichuski

Barbara McCarthy  
Barbara & Sam McKenney  
Lynn Morgan  
Cathy O'Neal  
Karen & Harry Parker  
Gary Payne  
Randy Pearlman  
Danielle Pickard  
Steven Pounders  
William Raecke  
Jeff Rane  
Amanda Reyes  
Darla & John Robinson  
Karen Robinson  
Dana Schultes  
Lewis Schwartz  
Linda Siy  
Carol & Pat Stanford  
Dennis & Tish Trojak  
Brad & Cindy Vetter  
Margaret Villari  
Jessica Wallace  
Brett Warner  
Bruce & Hollace Weiner  
Mary M Williams  
Marianne Wilson  
Roberta Zeitlin  
Timber Creek HS Theatre Dept.

# Your tax-deductible donation plays an important role at Circle Theatre!

Please take a minute to give a tax-deductible donation while at the show, call 817.877.3040 and charge your contribution over the phone, or donate online at [circletheatre.com](http://circletheatre.com)

---

Thank you for supporting Circle's efforts  
to bring first-class live theatre to Fort Worth.

---

## Rose Pearson & Bill Newberry LEGACY FUND

Please consider contributing to the  
Rose Pearson & Bill Newberry Legacy Fund  
to continue their theatrical vision in the  
Fort Worth Community.





## 26 CONTACT & POLICIES

---

### Performance Schedule and Pricing - Mainstage

Thursday evening.....7:30pm \$40-\$55  
Friday evening.....8:00pm \$40-\$55  
Saturday matinee.....3:00pm \$40-\$55  
Saturday evening.....8:00pm \$40-\$55

### Box Office

When a play is in performance, the box  
office opens one hour before show time.

Phone ..... 817.877.3040

Online ..... CircleTheatre.com

Hours..... T-F | 11:00am - 4:00pm

---

### Ticket Policies for Main Season Shows

**ALL TICKET SALES ARE FINAL AND NON-REFUNDABLE.**

Reservations must be paid in advance. Only one discount may be applied to each ticket.  
Discounts or special offers may NOT be used for opening night performances.

**Season ticket-holders** receive a \$10 VIP discount when purchasing additional guest tickets.

**School Nights:** Students and staff may purchase tickets at a discount with a valid school ID.  
(Subject to availability)

**Seniors (65+) and Military:** 10% off all performances.

**Groups:** Discount varies based on size — check circletheatre.com or call our box office.

---

### Parking and Safety Policies

- **Metered Street Parking:** We highly suggest parking on the street, as the rules have not changed for 2026. Street parking is free after 6pm on weekdays and all day on weekends. Payment for parking (pre-6pm) is through the app FW Park.

- SUNDANCE SQUARE GARAGES #3 & #4 are Circle Theatre's preferred garages starting January 2026. Sundance Square NO LONGER offers free night or weekend parking. You must request a validation ticket from us upon your visit to the theater. Circle Theatre can only validate up to 2.5 hours of parking in these garages. **You must ask for a parking validation slip or you will be charged for parking!**

Questions? Email [boxoffice@circletheatre.com](mailto:boxoffice@circletheatre.com) | Call 817.877.3040

## ARE YOU ON OUR EMAIL LIST?

Sign up at the box office or go online to [CircleTheatre.com](http://CircleTheatre.com)  
to receive information about upcoming shows or events.

# SPECIALTY EVENTS

A Night with

\* Janis Joplin

January 29–February 21, 2026

Thursdays 7:30 pm, Fridays 8 pm, Saturdays 3 pm and 8 pm



**JAN 29–31**

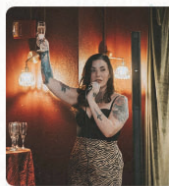
**PREVIEWS!**

Be the first to  
**immerse** yourself  
into the show

**JAN 31**

**OPENING NIGHT  
CELEBRATION**

Stay after the show and  
**celebrate** with the  
cast + crew



**FEB 6**

**ROCK THE LOOK**

Put on your 60's best  
and enter to win our  
**costume contest**



**FEB 13**

**LOCAL LEGENDS**

Hang out in the Velvet  
Lounge for a panel  
made up of DFW's  
own **ICONS**



**FEB 12–14**  
**VALENTINES WEEKEND**

Celebrate **love** -  
enjoy sweet treats,  
specialty drinks, and  
late night dancing



**FEB 21**

**KARAOKE NIGHT**

Stay late after the  
closing show...it's  
**your turn** to  
grab the mic

# ONLY @ CIRCLE THEATRE

**TELL YOUR FRIENDS!**

Check in on  
Facebook & Twitter  
and tag us on  
Instagram @circletheatre  
so we can share the fun!



Please leave some  
encouraging words  
to our performers &  
theater—scan our QR  
code!

# **LEAD ON,<sup>®</sup> CREATIVELY.**



At TCU's Department of Theatre, you'll immerse yourself in a premier artistic and academic program, gaining invaluable experience both on stage and behind the scenes through our award-winning productions.



From Script to Stage

[go.tcu.edu/theatre](http://go.tcu.edu/theatre)

**TCU**